

MISSION-FOCUSED SOLUTIONS

TRUSTED AGENT OF THE GOVERNMENT

As a University Affiliated Research Center (UARC) owned by Utah State University, the Space Dynamics Laboratory (SDL) is committed to providing innovative, world-class sensor systems, satellites, and supporting technologies to address the nation's biggest challenges. SDL is customer driven, mission focused, and technology enabled.

SDL's diverse and talented workforce includes scientists, engineers, and business professionals dedicated to providing solutions that support all mission phases, from concept to completion.

STRENGTHENING NATIONAL DEFENSE

Delivering advanced multi-domain solutions that support the warfighter, protect our national intelligence assets, and provide a tactical advantage.

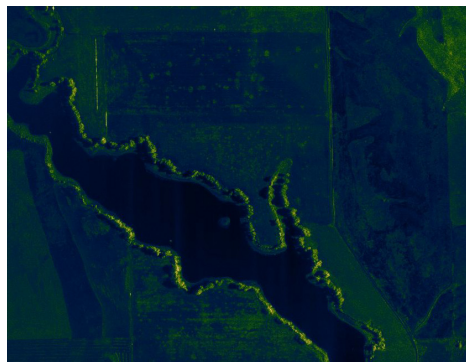
DISCOVERING THE UNKNOWN

Supporting NASA's vision "to discover and expand knowledge for the benefit of humanity."



LAND, SEA & AIR DEFENSE

Effective Command, Control, Communications, Computers, Intelligence, Surveillance, and Reconnaissance (C4ISR) solutions that deliver rapid results.



SPACE DEFENSE

Critical and strategic space-based solutions to help the nation excel in an increasingly complex and competitive environment.



SCIENCE & SPACE EXPLORATION

Powerful and reliable solutions to support missions that benefit humankind, make unprecedented discoveries, and increase our knowledge and understanding of the universe.



FULL-SERVICE CAPABILITIES

SDL has been developing and expanding its core capabilities and expertise since 1959. Taking advantage of the latest technological advancements, SDL pushes boundaries in research and development to provide state-of-the-art solutions.

Core capabilities include the following:

- Mission systems (space & tactical)
- Sensors & sensor systems (UV/EO/IR, lidar, radar)
- Satellite technologies
- Ground systems
- Mission operations
- Assembly, integration & test (AI&T)
- Calibration, test & evaluation
- Unmanned aerial systems (UAS)
- Cyber analytics
- Artificial intelligence & machine learning

ONE-STOP SHOP

SDL's experienced engineering staff, expansive facilities, and equipment make it a one-stop shop for mission support.

With a focus on quality and continual improvement, SDL incorporates a strict quality management system that is certified to the AS9100D standard.

Key facilities include the following:

- Comprehensive machine shop
- Electronics assembly lab
- AI&T high bays, cleanrooms & labs
- Sensor calibration & performance testing
- Environmental testing
- Small satellite performance & propulsion testing
- Flight testing with manned & unmanned assets
- Mission operation control centers

STRATEGIC LOCATIONS

SDL's strategic locations enable staff to support customer needs nationwide.

Headquarters

North Logan, UT

Field Offices

Albuquerque, NM

Chantilly, VA

Huntsville, AL

Ogden, UT

Stafford, VA

Embedded Customer Support Locations

Colorado Springs, CO

Los Angeles, CA

Washington, DC